



Flowmeters, Purges, Valves & Accessories

Protocol Station Bench Stands



Shown with regulator and protocol station (sold separately)

The Protocol Station Bench Stand is designed to mount a regulator with an attached Protocol Station to a laboratory bench. Combined with a bench mount bracket (518-1614), both the cylinder and regulator can be secured safely at the point of use. (Please see page 34-39 for more information about protocol stations.)

Materials and Specifications

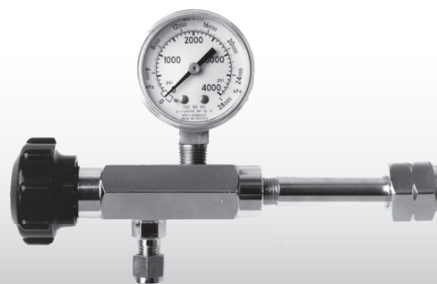
- Bracket Material
11 Gauge hot rolled steel
- Post Material
11 Gauge hot rolled steel
- Height
22" to 44" above bench (adjustable)
- Maximum Bench Thickness
2½"

Ordering Information

Stock No.	Description
518-1626	Protocol Station Bench Stand

Manual Control Valves

The 535 Series manual control valves provide an economical means of controlling gas flow directly from a cylinder. These valves do not control pressure or back pressure in a system. If greater flow accuracy or pressure control is required, CONCOA recommends the use of an appropriate regulator (see page 10 for more information). The 535 Series manual control valves are available with a variety of connections, with or without a pressure gauge.



Materials and Specifications

- Maximum Inlet Pressure
3000 PSIG (210 BAR)
- Temperature Range
-65°F to 250°F (-54°C to 120°C)
- Outlet Connection
¼" Tube Fitting
- Weight (without gauge)
1.0 lbs. (0.45 kg)
- Weight (with gauge)
1.1 lbs. (0.5 kg)

Ordering Information

Stock No.	Body	Gauge
535-2030-CGA	Forged Chrome-Plated Brass	Without Pressure Gauge
535-2031-CGA	Forged Chrome-Plated Brass	With Pressure Gauge (0 to 4000 PSI)
535-2032-CGA	Forged 303 Stainless Steel	Without Pressure Gauge
535-2033-CGA	Forged 303 Stainless Steel	With Pressure Gauge (0 to 4000 PSI)