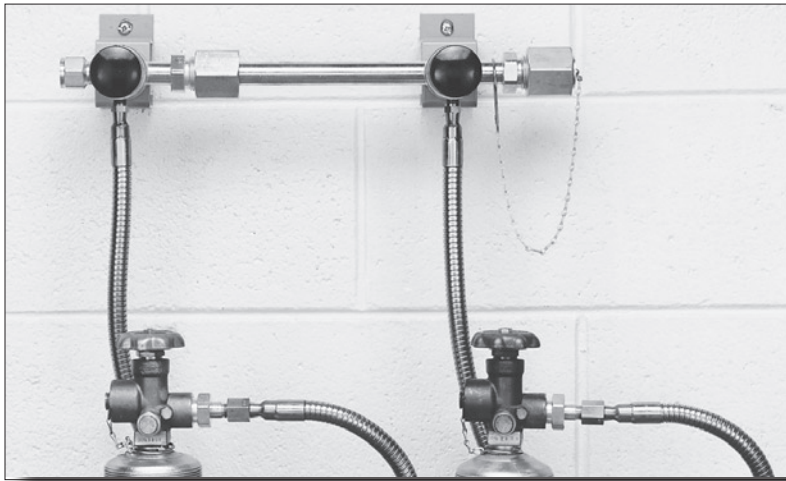




## 628 Series Maniflex HF

### Manual Modular Manifold High Flow



The 628 Series Maniflex Modular Gas Distribution System is a flexible modular system designed for centralized gas distribution regardless of facility constraints. The modules contained in the header are available in standard, compact, or double-row versions, allowing many combinations which will adapt to any physical environment. For acetylene, pigtails with integral flashback arrestors are available to conform to OSHA requirements for manifolds. For other fuel gases, arrestors are required downstream to conform to OSHA requirements for manifolds.

### Advanced Features

- Modular Design - Flexible field installation
- Integral Diaphragm Valves - Leak-tight integrity, no gas contamination
- Brass or Chrome-Plated Brass - No possibility of gas contamination
- Metal to Metal Field-Assembled Joints - Easy leak-tight field assembly, ease of transportation
- Silver-Brazed Modules - Contamination-free installation

### Specifications

- Maximum Inlet Pressure 3000 PSIG (210 BAR)
- Temperature Range -40°F to 140°F (-40°C to 60°C)
- Inlet Connections ¼" FPT
- Outlet Connections ½" FPT
- Header 0.875 OD x 0.125 wall (Brass)
- Diaphragm Valve
  - Brass barstock (Body)
  - PCTFE (Seat)
  - 316 stainless steel (Stems)
  - Elgiloy® (Diaphragms)

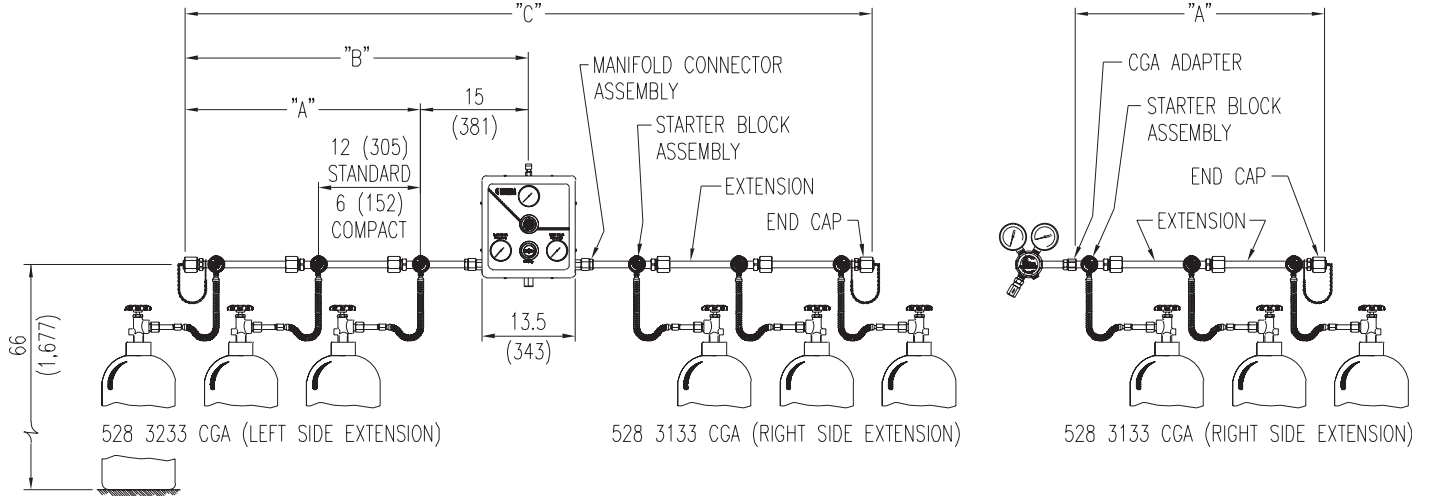
### Dimensions ("A", "B", and "C" refer to the lengths specified on following page.)

Cylinders Per Extension	1	2	3	4	5	6	7	8	9	10
"A" Standard (Single Row)	6"	18"	30"	42"	54"	66"	78"	90"	102"	114"
"B" Standard (Single Row)	15"	27"	39"	51"	63"	75"	87"	99"	111"	123"
"C" Standard (Single Row)	30"	54"	78"	102"	126"	150"	174"	198"	222"	246"
Weight Standard (Single Row)	5.7 lbs	11.8 lbs	17.9 lbs	24.0 lbs	31.1 lbs	36.2 lbs	42.3 lbs	48.4 lbs	54.5 lbs	60.6 lbs
"A" Compact (Single Row)	6"	12"	18"	24"	30"	36"	42"	48"	54"	60"
"B" Compact (Single Row)	15"	21"	27"	33"	39"	45"	51"	57"	63"	69"
"C" Compact (Single Row)	30"	42"	54"	66"	78"	90"	102"	114"	126"	138"
Weight Compact (Single Row)	5.7 lbs	11.2 lbs	16.7 lbs	22.2 lbs	27.7 lbs	33.2 lbs	38.7 lbs	44.2 lbs	49.7 lbs	55.2 lbs

# Manifolds



## System Diagram



## Ordering Information

Series	A	B	C	D	E	F
Material	Orientation	Pigtail Style	Number of Cylinders	Inlet	Options	
628					Please specify inlet connection.	F: Arrestor
1: Brass	1: Standard Single Row (right)		1: 1 Cylinder		PTFE <sup>®</sup> -lined pigtails for oxygen service include accumulator extensions to prevent ignition from adiabatic compression.	
	2: Standard Single Row (left)	2: 24" Rigid Copper	2: 2 Cylinders			
	3: Standard Double Row	3: 72" Flexible Stainless Steel Armor Case w/ Stainless Steel Core	3: 3 Cylinders			
	4: Compact single row (right)	4: 24" Flexible Stainless Steel braided w/ PTFE <sup>®</sup> lining	4: 4 Cylinders			
	5: Compact Single Row (left)	5: 36" Flexible Stainless Steel Armor Case w/ Stainless Steel Core	5: 5 Cylinders			
	6: Compact Double row	6: 36" Flexible Stainless Steel braided w/ PTFE <sup>®</sup> lining	6: 6 Cylinders			
		7: 24" Flexible Stainless Steel Armor Case w/ Stainless Steel Core	7: 7 Cylinders			
		8: 36" Rigid Brass w/ Flash Arrestor (CGA 300 & 510 Acetylene only)	8: 8 Cylinders			
		9: 72" Flexible Stainless Steel-braided w/ PTFE <sup>®</sup> lining	9: 9 Cylinders			

## Maniflex Options

Option	Order Number	Description
Manifold Floor Stand	830-7437	Supports 2 standard length (12") manifold extensions installed consecutively
CGA Adapter for Regulators	529-0008-CGA	Brass (1/2" MPT x CGA)
Flashback Arrestors	801-8530	Use of Acetylene requires flashback arrestors and pigtails. Meets OSHA and NFPA Std. 51 requirements and complies with ISO 5175 (heavy class) DIN 8521, and BS 6158. See Page 44.