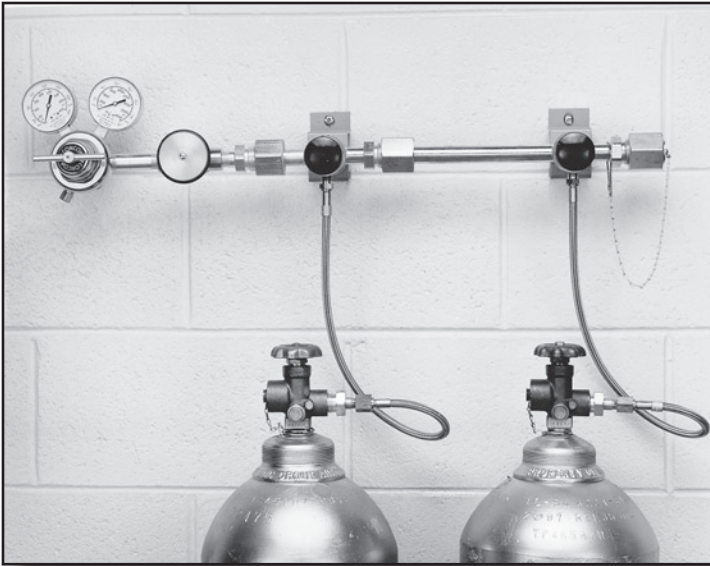


631 Series Simplex HF



The 631 Series Simplex combines a modular manifold system with the extra heavy-duty 6700 Series regulator. Line or station regulators should be installed at the point of use to ensure constant delivery pressure. Use of Acetylene requires flashback arrestor on pigtails. All fuel gases require flashback arrestors.

Advanced Features

- **6700 Regulator**
High flow capacity
- **Pressure Ranges 0-15 to 0-200 PSIG**
Broad range of applications
- **Integral Maniflex Manifold System**
Easy installation and expansion
- **Left and Right Banks**
Sizes to fit cylinders on either side
- **Standard or Compact Lengths**
12" or 6" lengths for easy installation
- **Pigtail Style Variety**
Copper, Brass or Flexible Stainless Steel

Applications

Pipeline Supply Source

200 PSIG delivery pressure meets NFPA guidelines without compromising flow capacity (15 PSIG maximum for Acetylene)

Fuel Gases

Safely supply acetylene and other fuel gases for cutting, heating or welding with OSHA regulation compliant manifold systems. Use of Acetylene requires flashback arrestor on pigtails. All fuel gases require flashback arrestors.

Materials

Delivery Regulator Body

Brass barstock

Delivery Regulator Bonnet

Forged Brass

Master Valve

Forged Brass

Diaphragm

Fabric-reinforced Neoprene

Internal Seals

PTFE ®

Seat

Viton®

Piping

Forged Brass

Specifications

Maximum Inlet Pressure

3000 PSIG (210 BAR)

Temperature Range

-40 to 140°F (-40 to 60°C)

Maximum Flow

6000 SCFH (2830 lpm)

Outlet Connection

½" FPT

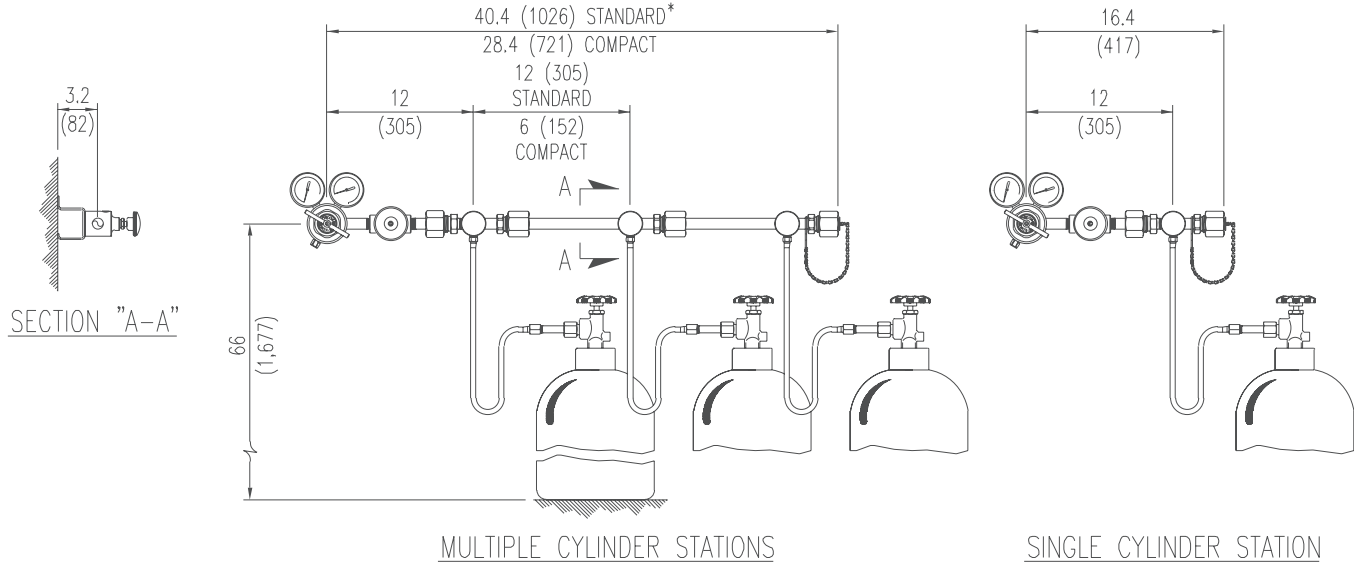
Weight

9.0 lbs. (4.1 kg)

Manifolds



Mounting and Dimensional Information for the 631 Series Simplex HF



Manifolds

Ordering Information

Series	A Outlet Pressure	B Manifold Style	C Pigtail Style	D Stations/Side	E Inlet	F Options
631					Please specify inlet connection	C: Foreign Inlets CO ₂ & Inert
	1: 0-15 PSIG	1: Standard Length (12" between stations) Right Side with One Cylinder/Station		1: One Station	PTFE®-lined pigtails for oxygen service include accumulator extensions to prevent ignition from adiabatic compression.	F: Arrestor for 300, 410, 510
	2: 0-40 PSIG	2: Standard Length (12" between stations) Left Side with One Cylinders/Station	2: 24" Rigid Copper	2: Two Stations		R: Foreign Inlets Ar, H ₂ , O ₂ , O ₂ Mix
	3: 0-120 PSIG	3: Standard Length (12" between stations) Right Side with Two Cylinders/Station	3: 72" Flexible Stainless Steel Armor Case w/ Stainless Steel Core	3: Three Stations		
	4: 0-200 PSIG	4: Compact Length (6" between stations) Right Side with One Cylinder/Station	4: 24" Flexible Stainless Steel braided w/ PTFE® lining	4: Four Stations		
	5: 0-15 PSIG Redline	5: Compact Length (6" between stations) Left Side with One Cylinders/Station	5: 36" Flexible Stainless Steel Armor Case w/ Stainless Steel Core	5: Five Stations		
		6: Compact Length (6" between stations) Right Side with Two Cylinders/Station	6: 36" Flexible Stainless Steel braided w/ PTFE® lining	6: Six Stations		
		7: Standard Length (12" between stations) Left Side with Two Cylinders/Station	7: 24" Flexible Stainless Steel Armor Case w/ Stainless Steel Core	7: Seven Stations		
		8: Compact Length (6" between stations) Left Side with Two Cylinders/Station	8: 36" Rigid Brass w/ Flash Arrestor (CGA 300 & 510 Acetylene only)	8: Eight Stations		
			9: 72" Flexible Stainless Steel-braided w/ PTFE® lining	9: Nine Stations		